

# REAR HEAT DUCT REMOVAL/INSTALLATION

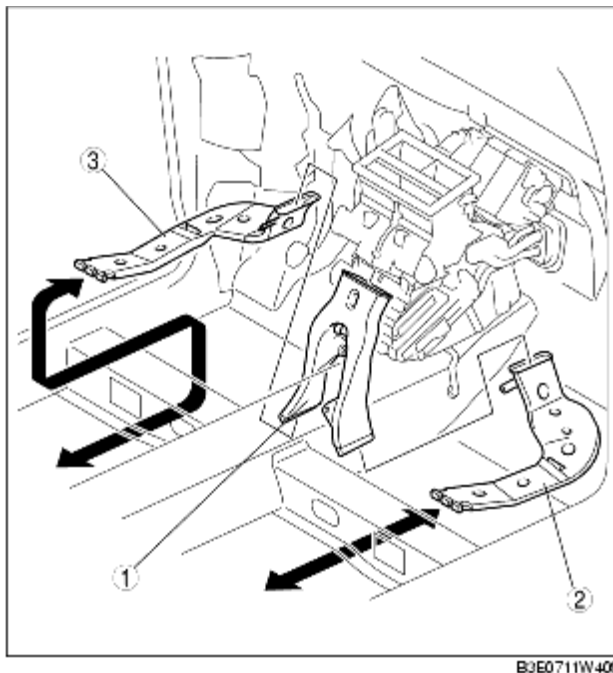
B3E071161273W01

1. Disconnect the negative battery cable.

2. Remove the following parts:

- (1) Front seat (See [FRONT SEAT REMOVAL/INSTALLATION.](#))
- (2) Rear seat (See [REAR SEAT REMOVAL/INSTALLATION.](#))
- (3) Front scuff plate (See [FRONT SCUFF PLATE REMOVAL/INSTALLATION.](#))
- (4) Console (See [CONSOLE REMOVAL/INSTALLATION.](#))
- (5) Front side trim (See [FRONT SIDE TRIM REMOVAL/INSTALLATION.](#))
- (6) Rear scuff plate (See [REAR SCUFF PLATE REMOVAL/INSTALLATION.](#))
- (7) B-pillar lower trim (See [B-PILLAR LOWER TRIM REMOVAL/INSTALLATION.](#))
- (8) Lower anchor of the front seat belt (See [FRONT SEAT BELT REMOVAL/INSTALLATION.](#))
- (9) Tire house trim (See [TIRE HOUSE TRIM REMOVAL/INSTALLATION.](#))
- (10) Fuel-filler lid opener lever cover (See [FUEL-FILLER LID OPENER REMOVAL/INSTALLATION \[L.H.D.\]](#).) (See [FUEL-FILLER LID OPENER REMOVAL/INSTALLATION \[R.H.D.\]](#).)
- (11) Floor covering (See [FLOOR COVERING REMOVAL/INSTALLATION.](#))

3. Remove in the order indicated in the table.



1	Rear heat duct (1)
2	Rear heat duct (2)
3	Rear heat duct (3)

4. Install in the reverse order of removal.